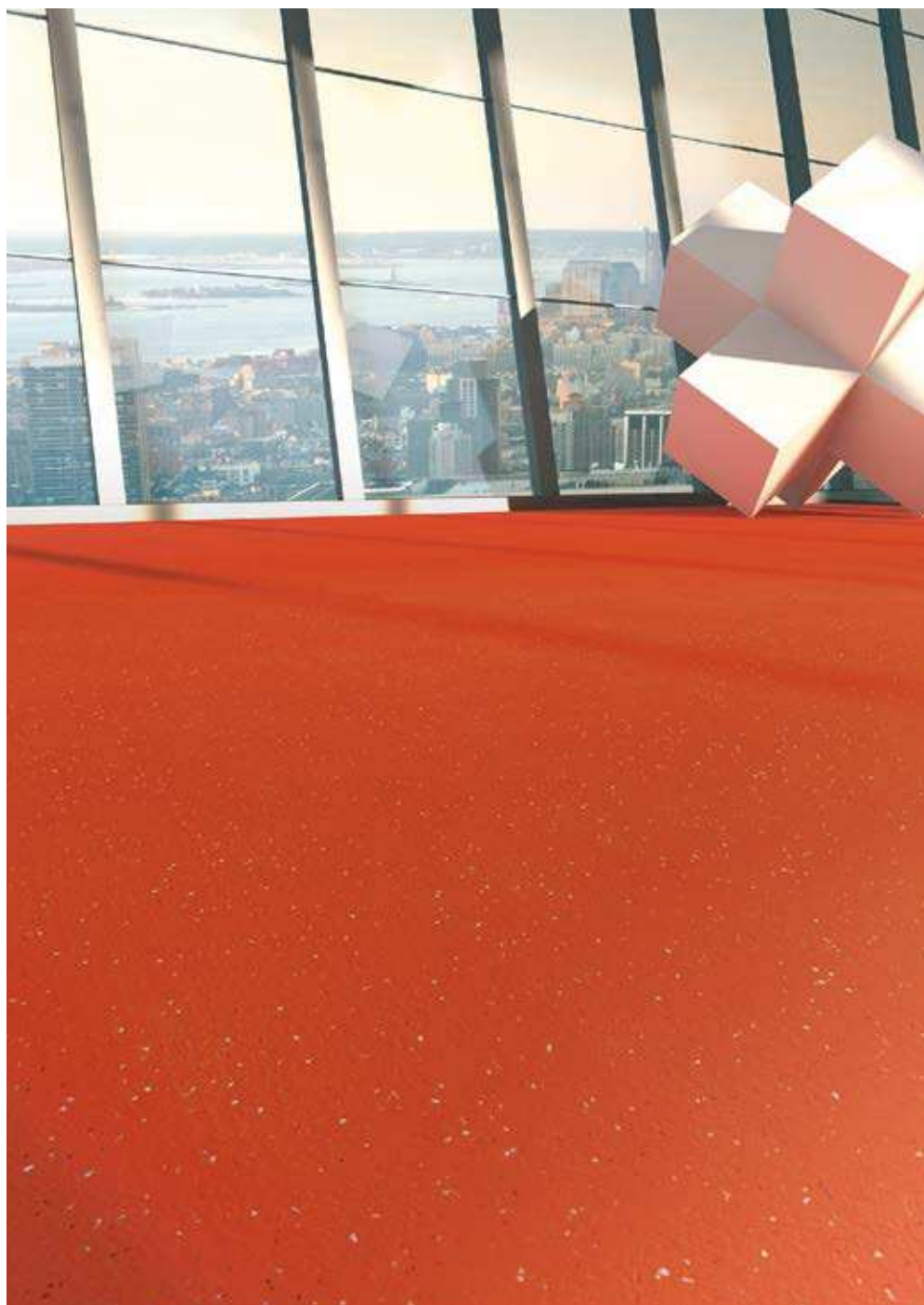


TARALAY ELEMENT

gerflor.com



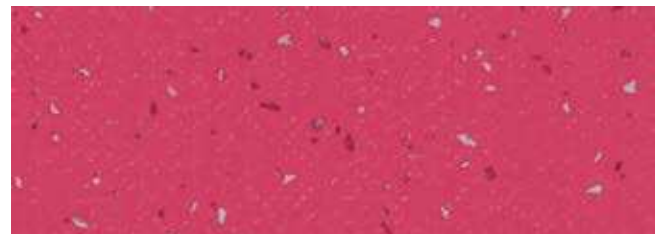
Gerflor[®]
theflooringgroup

FLOOR
COVERING

TARALAY ELEMENT city



4117 Bamako



4138 Paris



4144 Bangkok



4487 Berlin



4488 Santorini

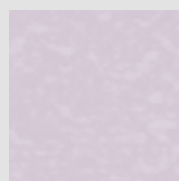


WALL
COVERING

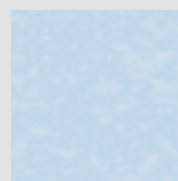
MURAL CALYPSO



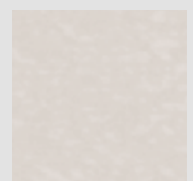
7412 Glow





7112 Lilac



7408 Skyline



7715 Crystal

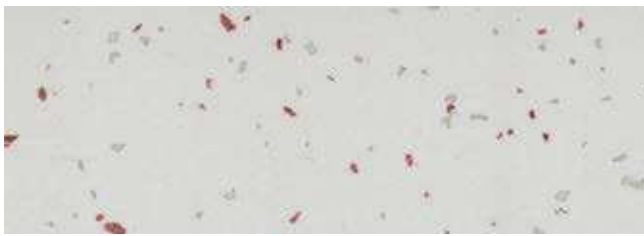
		17 dB	Protocolsol®	Sanosol®
---	---	-------	--------------	----------



Sheet without
foam backing



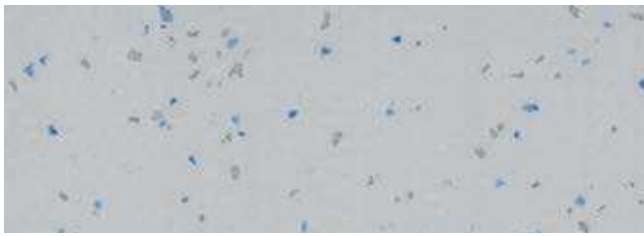
Sheet with
foam backing



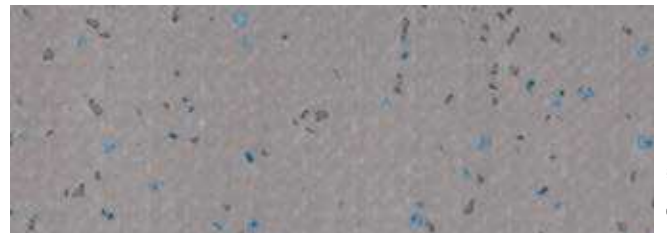
3739 Tokyo



3732 Copenhagen



3733 Stockholm



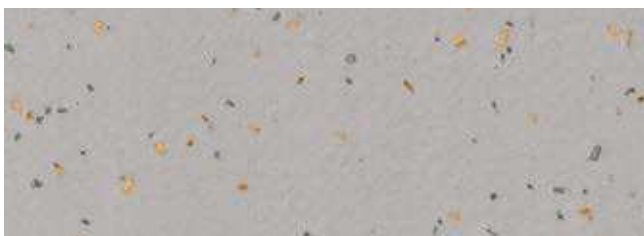
3743 New York



3744 Calgary



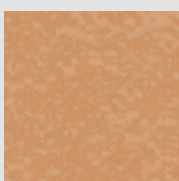
3752 Cape Town



3753 Amsterdam



8846 Las Vegas



7313 Camel



7323 Ochre



7110 Fushia



7420 Lagoon



7411 Blue

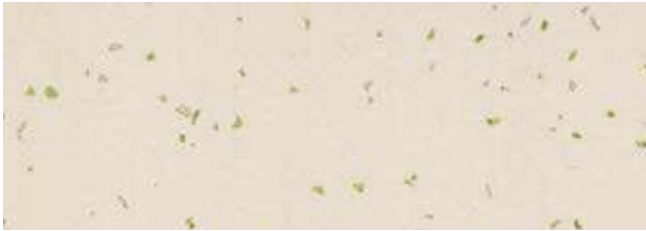


7201 Moonlight

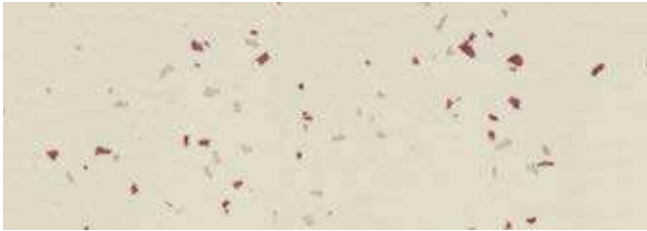
TARALAY ELEMENT city



4340 Dubai



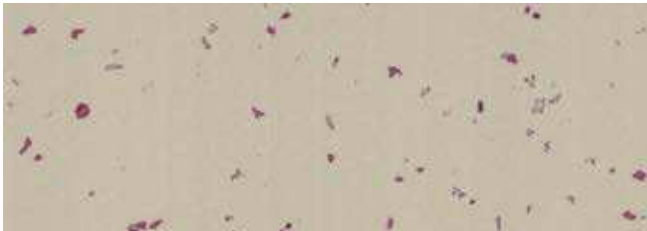
4341 Prague



4337 Bilbao



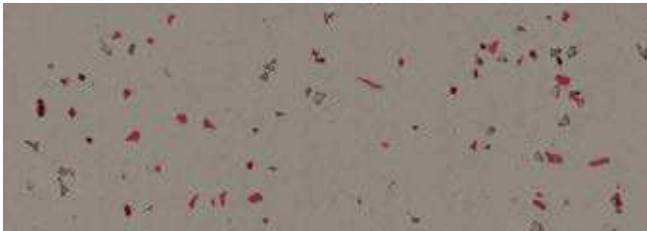
4339 Agadir



4338 London



8068 Kinshasa



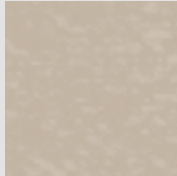
8067 Dakar



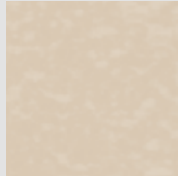
7104 Melon



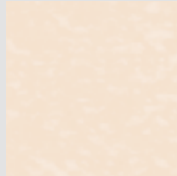
7505 Anise



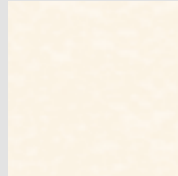
7712 Shadow




7311 Linen

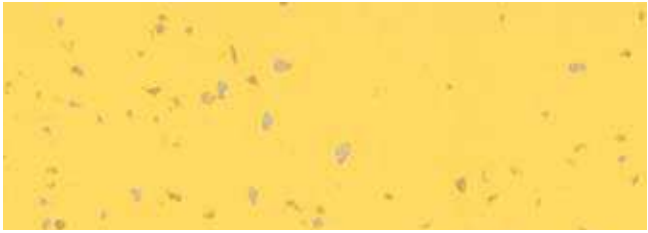


7309 Lotus



7611 Snow

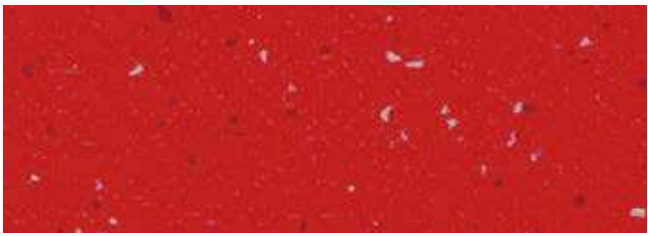
		17 dB	Protecsol®	Sanosol®
---	---	-------	------------	----------



8252 Shanghai



4115 Sydney



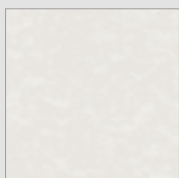
4134 Moscow



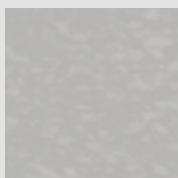
4490 Palermo



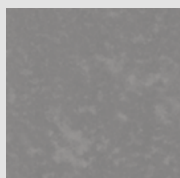
4523 Rio



7711 Ice



7714 Frost



7751 Steel





TARALAY ELEMENT city

TARALAY ELEMENT is a multilayered vinyl floorcovering available in 2m wide sheet, with a group T wear rating. The product comprises a 0.75mm thick, pure vinyl and coloured wear layer throughout the thickness, without a transparent wear layer. It is protected by **the surface treatment, ProtecSol®**, with a minimum thickness of 25µm, ensuring easy maintenance and no required polish for the entire lifetime of the product.

This product is antistatic and incorporates **Sanosol®**, a fungistatic and bacteriostatic treatment.

It does not contain any heavy metals or CMR 1&2 components and it is 100% compliant with REACH.

The product emission rate of volatile organic compounds is <100µg/m³ (TVOC after 28 days ISO 16000-6). It is 100% recyclable.

TARALAY ELEMENT COMPACT

This flooring is reinforced with a fibre glass grid for a better dimensional stability.

The construction of the product yields a 6dB sound insulation rating.

It is composed of 50% mineral and inexhaustible materials.

TARALAY ELEMENT COMFORT

This flooring comprises a Very High Density (VHD) foam and is reinforced with 2 fibre glass grids which yields a 17dB sound insulation rating and a resistance to indentation of 0.10mm.

It is composed of 47% mineral and inexhaustible materials.

CODE	COLOURS	LRV	NCS	WELDING RODS
8846	Las Vegas	6,0	8500-N	0585 2252
4144	Bangkok	10,6	4050-R50B	0585 2653
4134	Moscow	13,2	1580-Y90R	0585 2652
4488	Santorini	14,1	2565-R80B	0585 2658
4117	Bamako	15,8	3060-Y70R	0585 2651
8068	Kinshasa	15,9	6005-Y20R	0585 2662
3752	Cape Town	17,1	6500-N	0585 0888
4138	Paris	18,2	2060-R10B	0585 2547
4487	Berlin	18,9	5020-R90B	0585 2657
8067	Dakar	23,4	5502-Y	0585 2661
3743	New York	28,6	4500-N	0585 0337
4115	Sydney	31,4	1080-Y40R	0585 2650
4490	Palermo	32,5	2040-B	0585 2659

CODE	COLOURS	LRV	NCS	WELDING RODS
4339	Agadir	34,1	4005-Y20R	0585 2656
4340	Dubai	39,7	3005-Y50R	0585 0645
3753	Amsterdam	42,0	3000-N	0585 0201
3732	Copenhagen	43,8	2502-B	0585 0069
4338	London	44,5	2502-Y	0585 2655
3744	Calgary	48,6	2502-R	0585 0817
3733	Stockholm	50,3	2002-B	0585 0509
4523	Rio	56,8	0570-G60Y	0585 2660
4337	Bilbao	61,2	1505-Y	0585 2654
3739	Tokyo	61,7	1500-N	0585 0694
4341	Prague	63,3	1505-Y20R	0585 0153
8252	Shanghai	66,1	0550-Y10R	0585 0460

MURAL CALYPSO

A **NEW** wall covering to mix and match TARALAY ELEMENT floor covering

MURAL CALYPSO is a multilayered wall covering in 2m width roll and with a B-s2,d0 fire classification.

It is hot welded with CR41 welding rods.

It is made of a printed transparent wear layer and a coloured under layer containing for an easier welding of the product.

This layer comprises 20% of recycled products.

It does not contain any CMR 1&2 component and is 100% REACH compliant.

It is 100% recyclable.

TARALAY
ELEMENT
COMFORTTARALAY
ELEMENT
COMPACTMURAL
CALYPSO

DESCRIPTION / BESCHREIBUNG / DESCRIPTION / BESCHRIJVING / DESCRIPCIÓN / DESCRIÇÃO / DESCRIZIONE

Total thickness / <i>Gesamtdicke</i> / Epaisseur totale / <i>Totale dikte</i> / Espesor total / <i>Espeçura total</i> / Spessore totale	EN 428	mm	3.0	2.00	0.92
wearlayer / <i>Dicke Nutzschrift</i> / Epaisseur couche d'usure / <i>Dikte van de slijtlaag</i> / Espesor capa de uso / <i>Espeçura camada de desgaste</i> / Spessore strato di usura	EN 429	mm	0.75	0.75	0.10
Weight / <i>Flächengewicht</i> / Poids / <i>Gewicht</i> / Peso / <i>Peso</i> / Peso	EN 430	g/m ²	2850	2700	1610
Width/length of sheet / <i>Bahnenbreite/-länge</i> / Largeur/longueur des lés / <i>Rolbreedte/Rolengte</i> / Ancho/largo de rollos / <i>Largura/comprimento dos rolos</i> / Larghezza/lunghezza dei teli	EN 426	cm/lm	200/25	200/20	200/30

CLASSIFICATION / KLASSIFIZIERUNG / CLASSIFICATION / CLASSIFICATIE / CLASIFICACIONES / CLASSIFICAÇÕES / CLASSIFICAZIONI

Norm/product specification / <i>Produkt Norm</i> / Norme produit / <i>Technische eigenschappen</i> / Normas / <i>Normas</i> / Norma prodotto	-	-	EN 651	EN 649	EN 15 102
European classification / <i>Europäische Klassifizierung</i> / Classement européen / <i>Europese classificatie</i> / Europea / <i>Europeia</i> / Europea	EN 685	class	34-42	34-43	-
Fire rating / <i>Brandverhalten</i> / Classement feu / <i>Brand classificatie</i> / Fuego / <i>Fogo</i> / Reazione al fuoco	EN 13501-1	class	Cfl - s1	Bfl - s1	B-s2,d0
Static electrical propensity / <i>Begehaufldung</i> / Potentiel de charge / <i>Elektrische eigenschappen</i> / Comportamiento electrostático / <i>Comportamento electrostático</i> / Resistenza elettrica	EN 1815	kV	< 2	< 2	-

PERFORMANCES / TECHNISCHE EIGENSCHAFTEN / PERFORMANCES / TESTRESULTAAT / CUALIDADES TÉCNICAS / PERFORMANCES / CARATTERISTICHE TECNICHE

Wear resistance / <i>Verschleißverhalten</i> / Résistance à l'usure / <i>Slijtvastheid</i> / Abrasión / <i>Abrasão</i> / Resistenza all'abrasione	EN 660.2	mm ³	≤ 2.0	≤ 2.0	-
Wear group / <i>Verschleißgruppe</i> / Groupe d'abrasion / <i>Groep slijtvasheid</i> / Grupo de abrasión / <i>Grupo de abrasão</i> / Gruppo di abrasione	EN 649	group	T	T	-
Type Binder content / <i>Teneur en agent liant</i> / Bindemittelgehalt	ISO 10582	type	-	I	-
Dimensional stability / <i>Maßstabilität</i> / Stabilité dimensionnelle / <i>Maatvastheid</i> / Estabilidad dimensional / <i>Estabilidade dimensional</i> / Stabilità dimensionale	EN 434	%	≤ 0.40	≤ 0.40	-
Residual indentation (requirement) / <i>Resteindruck (Spezifikation)</i> / Poinçonnement (exigence) / <i>Indrukbelasting (vereist)</i> / Punzonamiento (valor) / <i>Punçamento (valor)</i> / Impronta (esigenza)	EN 433	mm	≤ 0.20	≤ 0.10	-
Residual indentation (value) / <i>Resteindruck (Messwert)</i> / Poinçonnement (mesuré) / <i>Indrukbelasting (meting)</i> / Punzonamiento (exigencia) / <i>Punçamento (exigência)</i> / Impronta (misura)	EN 433	mm	0.10	≈ 0.03	-
Castor chair test / <i>Stuhlrollenbeanspruchung</i> / Essai de la chaise à roulettes / <i>Rolweerstand bureaustoelen</i> / Determinación del efecto de una silla con ruedas / <i>Resistência a cadeiras de rodas</i> / Resistenza al passaggio di sed (Type W)	EN 425	-	OK	OK	-
Impact sound insulation / <i>Trittschallverbesserungsmaß</i> / Isolation acoustique / <i>Geluidsisolatie</i> / Acústica / <i>Acústica</i> / Isolamento acustico			17	6	-
Thermal conductivity / <i>Wärmeleitfähigkeit</i> / Conductivité thermique / <i>Thermische weerstand</i> / Resistencia térmica / <i>Resistência térmica</i> / Resistenza termica	EN 12 524	W/(m.K)	0.25	0.25	-
Colour fastness / <i>Lichtechtheid</i> / Solidité lumière / <i>Lichtechtheid</i> / Resistencia a la luz / <i>Estabilidade das cores</i> / Solidità alla luce	EN 20 105 B02	degree	≥ 6	≥ 6	≥ 6
Chemical resistance / <i>Verhalten gegenüber Chemikalien</i> / Résistance aux produits chimiques / <i>Chemische bestendigheid</i> / Resistencia a los productos químicos / <i>Resistência aos produtos químicos</i> / Resistenza ai prodotti chimici	EN 423	class	OK	OK	OK
Fungistatic and bacteriostatic treatment / <i>Fungistatisch und bakterioestatisch</i> / Fongistatique et bactériostatique / <i>Bacteriologisch en schimmelwerend</i> / Bacteriostático y fungistático / <i>Bacteriostático e fungistático</i> / Batteriostatico e micostatico	-	-	Sanosol®	Sanosol®	OK
Surface treatment / <i>Oberflächenvergütung</i> / Traitement de surface / <i>Oppervlaktebehandeling</i> / Tratamiento de superficie / <i>Tratamento de superficie</i> / Trattamento di superficie	-	-	Protocolsol®	Protocolsol®	-
TVOC after 28 days / TVOC (28 Tage) / TVOC après 28 jours / TVOC (28 dagen) / TVOC (28 dias) / TVOC (28 dias) / TVOC (28 giorni)	ISO 16000-6	µg / m ³	< 100	< 100	-

CE MARKING / CE KENNZEICHNUNG / MARQUAGE CE / EG-CONFORMITEITSMERK / MARCA DE CONFORMIDAD CE / MARCA DE CONFORMIDADE CE / MARCATURA CE DI CONFORMITA

CE	EN 14041	-				
		-			-	-

gerflor.com

ARCHITECTURE
DECORATION
SPORT
TECHNOSPECIFIC

ASIA: Gerflor Asia

Tel: +852 9222 6355 - Fax: +852 3006 1449
e-mail: gerflorasial@gerflor.com

AUSTRALIA/NEW ZEALAND: Gerflor Australasia Pty. Ltd

Australia Tel: 1 800 060 785 - New Zealand Tel: 0 800 630 119
e-mail: gerflor@gerflor.com.au

AUSTRIA/SWITZERLAND: Gerflor GmbH

Tel: +43 (0)72 29/70 800-0 - Fax: +43 (0)72 29/70 800-218
e-mail: austria@gerflor.com - switzerland@gerflor.com

BELGIUM/LUXEMBURG: Gerflor Benelux

Tel: +32 (0)3 766 42 82 - Fax: +32 (0)3 766 29 14
e-mail: gerflorbelgium@gerflor.com

CANADA: Gerflor International

Tel: +1-438-333-0752 - Fax: +1-438-380-5425
e-mail: gerflorcanada@gerflor.com

CHINA: Gerflor floorings (China) Co. Ltd.

Tel: +86 21 6357 8818 - Fax: +86 21 6357 8998
e-mail: gerflorchina@gerflor.com

FINLAND: Gerflor Oy

Tel: +358 (0) 10 6 17 5150 - Fax: +358 (0) 10 617 5152
e-mail: info@gerflor.fi

FRANCE: Gerflor - Service Express:

 0 810 569 569  0 810 569 570
PREV APPEL LOCAL

e-mail: contactfrance@gerflor.com

GERMANY: Gerflor Mipolam GmbH

Tel: 0 22 41-25 30-0
e-mail: gerflormipolam@gerflor.com
Kunden-Service: kundenservice@gerflor.com
Tel: 0 22 41-25 30-136 - Fax: 0 22 41-25 30-100
SAT Service und Anwendungstechnik: technik@gerflor.com
Tel: 0 22 41-25 30-555 - Fax: 0 22 41-25 30-550

IRELAND: Gerflor Ltd

Tel: +353 (0) 42 966 1431 - Fax: +353 (0) 42 966 1759
e-mail: gerflorirl@gerflor.com

ITALY: Gerflor S.p.A.

Tel: +39 02 90 40 10 - Fax: +39 02 90 42 74 84
e-mail: gerfloritalia@gerflor.com

LATIN AMERICA (Brazil): Gerflor América Latina

Tel: +55 11 38 48 20 20 - Fax: +55 11 38 48 20 23
e-mail: gerflor@gerflor.com.br

MIDDLE EAST: Gerflor Middle East

Tel: +966 3 847 1779 - Fax: +966 3 847 1781
e-mail: gerflorME@gerflor.com

NETHERLANDS: Gerflor BV

Tel: +31 (0)40 266 17 00 - Fax: +31 (0)40 257 46 89
e-mail: gerflorNL@gerflor.com

OTHER COUNTRIES: Gerflor International

Tel: +33 (0)4 74 05 40 00 - Fax: +33 (0)4 74 05 03 13
e-mail: gerflorcontract@gerflor.com

POLAND: Gerflor Polska Sp z o.o

Tel: + 48 61 823 34 01 - Fax: + 48 61 823 34 33
e-mail: info@gerflor.pl

PORTUGAL: Gerflor Iberia, SA

Tel: +351 21 843 95 49 - Fax: +351 21 846 55 44
e-mail: gerflorportugal@gerflor.com

RUSSIA: Gerflor zao

Tel./Fax: + 7 495 785 23 71
e-mail: gerflorussia@gerflor.ru

SCANDINAVIA: Gerflor Scandinavia a.s.

Tel: + 47 64 95 60 70 - Fax: + 47 64 95 60 80
e-mail: gerflorscand@gerflor.no

SPAIN: Gerflor Iberia, SA

Tel: +34 91 653 50 11 - Fax: +34 91 653 25 85
e-mail: gerfloriberia@gerflor.com

UNITED KINGDOM: Gerflor Ltd

Sample service: Contractuk@gerflor.com
Office Tel: + 44 (0) 1926 622 600 - Fax: + 44 (0) 1926 401 647

USA: Gerflor North America

Tel: 877 GERFLOR (437 3567) - Fax: 847 394 3753
e-mail: info@gerflorusa.com

RC Lyon B 726-580 152 - jpe - Printed in CEE 209 406 - 04/2013

Gerflor. Don't forget our complementary ranges!



Handrails



Wall Coverings & Protections



Entrance mats



Skirtings & Profiles

and *Be* CONNECTED!



www.gerflor.com



Health & Safety



ISO 14001



Recycling



Life Cycle Analysis

Committed to sustainable development

Gerflor[®]
theflooringroup