

MIPOLAM SYMBIOZ™

gerflor.com



Gerflor[®]
theflooringroup

MIPOLAM SYMBIOZ™



MIPOLAM SYMBIOZ™ is a fully flexible homogeneous compacted floorcovering in sheet, 2m wide, abrasion group T, providing excellent resistance to wear and tear in high traffic areas. Its weight is **2580 gr/m²**.

It features a non directional design incorporating coloured chips to ensure an even colour throughout the thickness presenting a **nice matt finish**.

MIPOLAM SYMBIOZ™ contains over 75% sustainable or renewable raw materials. It includes a 100% bio based plasticizer, made of residues from cereals (wheat, corn...).

This floorcovering is a non emissive product (below the level of VOC measurement accuracy).

The flooring is equipped with **Evercare™**, patented surface treatment obtained by **UV laser cross-linking** offering the best **chemical resistance to the main products used in healthcare** environment as

Betadine, eosin, hydro alcoholic solutions, making the maintenance easy and long lasting the flooring.

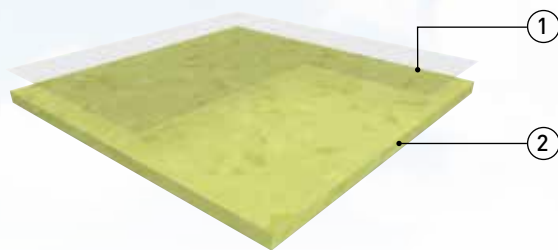
This treatment **avoids applying any acrylic emulsion** throughout the lifetime of the product.

The flooring is **antistatic** (<2kV), its residual indentation is < 0.02 mm to 150 minutes respecting EN 433.

The flooring complies with **EN 649 (34-43)** offering a **group T** wear rating suitable for heavy duty traffic areas and **Br1-s1** fire resistance.

As part of our sustainable development policy, this product is manufactured in the first floor covering plant awarded with the triple certification: ISO 9001 (quality), ISO 14 001 (environment) and OHSaS 18001 (safety).

The flooring is **antistatic** (<2kV), its residual indentation is < 0.02 mm to 150 minutes respecting EN 433.



① **evercare™** treatment

② **Densely compacted surface with 100% bio plasticizer**

EVERCARE™ TECHNOLOGY

AN EXCLUSIVE PATENTED TECHNOLOGY BY GERFLOR

THE BEST CHEMICAL STAIN RESISTANCE SURFACE TREATMENT

| | | |
|--|--|--|
| <p>Highly Durable: Exclusive surface treatment applied by UV laser cross-linking provides superior durability and an even surface thickness, creating an impenetrable barrier against stains and chemicals found in healthcare.</p> <p>Life expectancy of over 20 years.</p> | | |
| <p>100% non-porous surface: The surface treatment creates a 100% non-porous barrier to all liquids and chemicals, keeping all stains floating on the surface.</p> <p>Simple and easy stain removal.</p> | | |

STAINING TEST BEFORE CLEANING



Betadine

RESULTS AFTER CLEANING

Using a neutral detergent

| | EVERCARE™ TECHNOLOGY | OTHER HOMOGENEOUS SHEET | RUBBER | LINOLEUM | VCT |
|------------------|----------------------|-------------------------|--------|----------|-----|
| After 5 minutes | | | | | |
| After 60 minutes | | | | | |

Stain : **BETADINE® IODINE**

Mipolam Symbioz™



Life

- Highest durability: T group
- Indoor air quality: Very low VOC Emission
- 100% recyclable



RAW MATERIALS

- 75% sustainable or renewable resources
- 100% bio based plasticizer



The lowest environmental impact at every stage of the product life



INSTALLATION

- Highly flexible homogeneous flooring
- Easy to install & weld
- Welding rod: 100% bio based plasticizer

PRODUCTION

- Made in Germany
- ISO9001, ISO14001 and OHSAS 18001 certified factory
- 100% post manufacturing wastes recycled

TRANSPORT

- Product weight 20% lower than standard product
- All raw materials available within 350 km from production site

MIPOLAM SYMBIOZ™



| | | | |
|---|---|-----------|---|
|  | T | EVERCARE™ |  100% recyclable |
|---|---|-----------|---|



6027 Acacia

NCS: 2040-G80Y
LRV: 44,6



6007 Garden

NCS: 2030-G50Y
LRV: 57,5



6006 Blue Sky

NCS: 2020-B
LRV: 50,3



6017 Grass

NCS: 2020-G10Y
LRV: 42,0



6016 Sea Blue

NCS: 3040-R90B
LRV: 30,5



6037 Lagoon

NCS: 4030-B30G
LRV: 28,2



6046 Blue Night

NCS: 4050-R80B
LRV: 10,6



6048 Lavender

NCS: 4020-R30B
LRV: 23,0



6055 Tomato

NCS: 3050-Y90R
LRV: 14,9



6035 Sunset

NCS: 2050-Y60R
LRV: 33,1



6032 Sunshine

NCS: 1040-Y10R
LRV: 55,4

MIPOLAM SYMBIOZ™

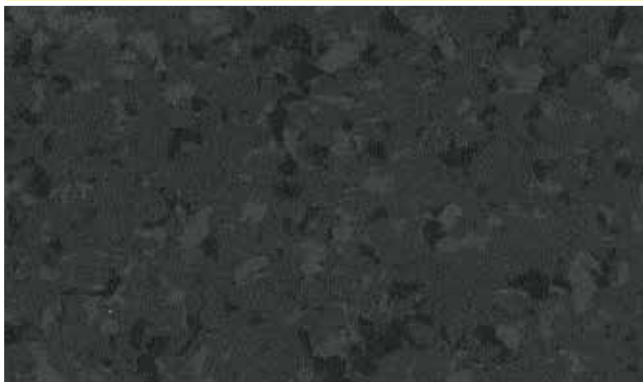


| | | | |
|--|---|-----------|---|
|  2 m | T | EVERCARE™ |  100% recyclable |
|--|---|-----------|---|



6029 Cloud

NCS: 4500-N
LRV: 32,5



6059 Black Diamond

NCS: 8500-N
LRV: 5,8



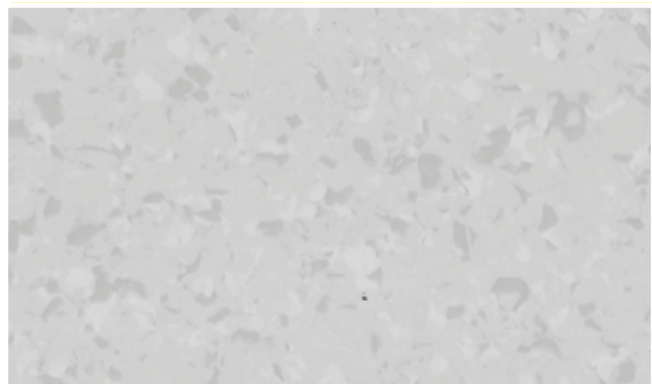
6010 Mist

NCS: 2502-Y
LRV: 47,8



6044 Sea Storm

NCS: 6502-Y
LRV: 15,7



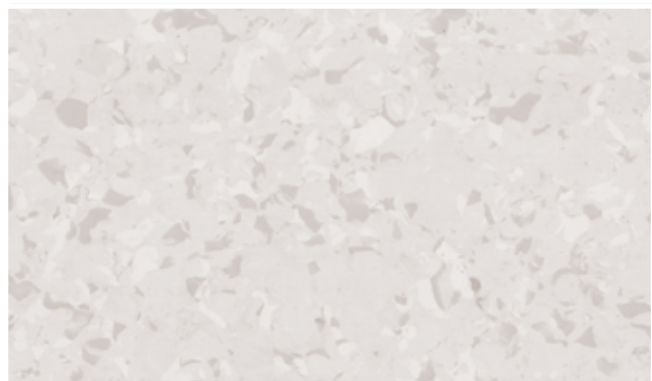
6009 Grey Stone

NCS: 2500-N
LRV: 52,4



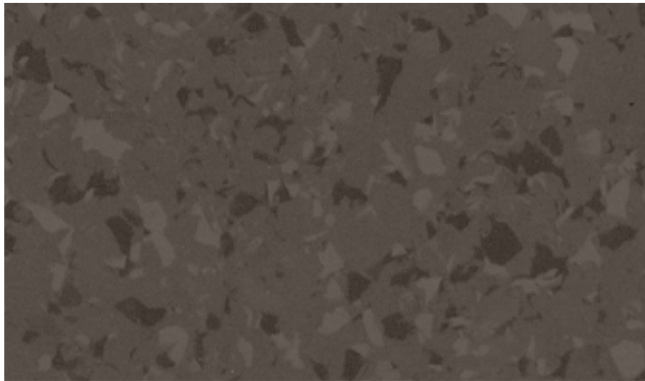
6039 Pebble

NCS: 4000-N
LRV: 32,0



6008 Calico

NCS: 1502-R
LRV: 66,1



6045 Chocolate

NCS: 7005-Y80R
LRV: 9,3



6034 Mole

NCS: 4010-Y30R
LRV: 33,5



6043 Wood

NCS: 5005-Y50R
LRV: 24,3



6004 Sandstone

NCS: 2020-Y20R
LRV: 56,1



6041 Clay

NCS: 3005-Y40R
LRV: 40,0



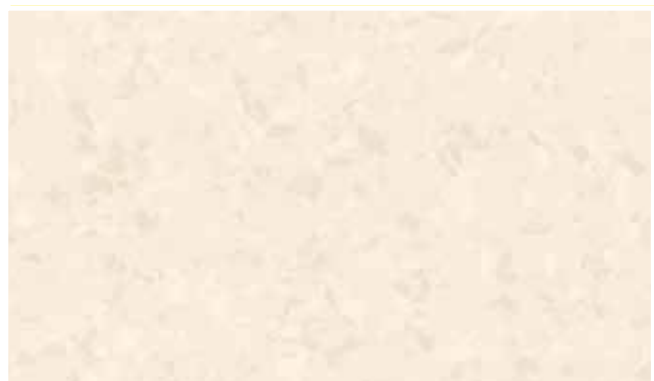
6003 Linen

NCS: 2010-Y10R
LRV: 58,7



6031 Breeze

NCS: 2005-Y40R
LRV: 48,5



6001 Cotton

NCS: 1005-Y50R
LRV: 73,1

| DESCRIPTION / <i>BESCHREIBUNG</i> / DESCRIPTION / <i>BESCHRIJVING</i> / DESCRIPCIÓN / <i>DESCRIÇÃO</i> / DESCRIZIONE | Mipolam Symbioz™ | | |
|--|------------------|-------------------|--|
| Total thickness / <i>Gesamtdicke</i> / Epaisseur totale / <i>Totale dikte</i> / Espesor total / <i>Espessura total</i> / Spessore totale | EN 428 | mm | 2.00 |
| | ASTM F386-02 | inch | 0.08 |
| Weight / <i>Flächengewicht</i> / Poids / <i>Gewicht</i> / Peso / <i>Peso</i> / Peso | EN 430 | g/m ² | 2580 |
| Width/length of sheet / <i>Bahnenbreite/-länge</i> / Largeur/longueur des lés / <i>Rolbreedte/Rollengte</i> / Ancho/largo de rollos / <i>Largura/comprimento dos rolos</i> / Larghezza/lunghezza dei teli | EN 426 | cm/lm | 200/20 |
| | - | feet - inch | 6' 6" / 66" |
| Coverage / roll | - | sq.ft | 430.56 |
| | - | m ² | 40 |
| CLASSIFICATION / <i>KLASSIFIZIERUNG</i> / CLASSIFICATION / <i>CLASSIFICATIE</i> / CLASIFICACIONES / <i>CLASSIFICAÇÕES</i> / CLASSIFICAZIONI | | | |
| Norm/product specification / <i>Produkt Norm</i> / Norme produit / <i>Technische eigenschappen</i> / Normas / <i>Normas</i> / Norma prodotto | - | - | EN 649 |
| | ASTM F 1913-04 | - | compliant |
| European classification / <i>Europäische Klassifizierung</i> / Classement européen / <i>Europese classificatie</i> / Europea / <i>Europeia</i> / Europea | EN 685 | class | 34-43 |
| Fire rating / <i>Brandverhalten</i> / Classement feu / <i>Brand classificatie</i> / Fuego / <i>Fogo</i> / Reazione al fuoco | EN 13501-1 | class | Bfl - s1 |
| | ASTM E648-08 | class | Class 1 |
| | CAN/ULC 102.2 | - | tested in accordance |
| Static electrical propensity / <i>Begehaufldung</i> / Potentiel de charge / <i>Elektrische eigenschappen</i> / Comportamiento electrostático / <i>Comportamento electrostático</i> / Resistenza elettrica | EN 1815 | kV | < 2 |
| PERFORMANCE / <i>TECHNISCHE EIGENSCHAFTEN</i> / PERFORMANCES / <i>TESTRESULTAAT</i> / CUALIDADES TÉCNICAS / <i>PERFORMANCES</i> / CARATTERISTICHE TECNICHE | | | |
| Wear resistance / <i>Verschleißverhalten</i> / Résistance à l'usure / <i>Slijtvastheid</i> / Abrasión / <i>Abrasão</i> / Resistenza all'abrasione | EN 660.2 | mm ³ | ≤ 2.0 |
| Wear group / <i>Verschleißgruppe</i> / Groupe d'abrasion / <i>Groep slijtvastheid</i> / Grupo de abrasión / <i>Grupo de abrasão</i> / Gruppo di abrasione | EN 649 | group | T |
| Type binder content / <i>Bindenmittelgehalt</i> / Teneur en agent liant | ISO 10581 | Type | I |
| Dimensional stability / <i>Maßstabilität</i> / Stabilité dimensionnelle / <i>Maatvastheid</i> / Estabilidad dimensional / <i>Estabilidade dimensional</i> / Stabilità dimensionale | EN 434 | % | ≤ 0.40 |
| Residual indentation / <i>Resteindruck</i> / Poinçonnement statique rémanent / <i>Indrukbelasting</i> / Punzonamiento / <i>Punçoamento</i> / Impronta | EN 433 | mm | ≈ 0.02 |
| Castor chair test / <i>Stuhlrollenbeanspruchung</i> / Essai de la chaise à roulettes / <i>Rolweerstand bureaustoelen</i> / Determinación del efecto de una silla con ruedas / <i>Resistência a cadeiras de rodas</i> / Resistenza al passaggio di sedie con rotelle (Type W / Typ W) | EN 425 | - | OK |
| Thermal conductivity / <i>Wärmeleitfähigkeit</i> / Conductivité thermique / <i>Thermische weerstand</i> / Resistencia térmica / <i>Resistência térmica</i> / Resistenza termica | EN 12 524 | W/(m.K) | 0.25 |
| Colour fastness / <i>Lichtechtheit</i> / Solidité lumière / <i>Lichtechtheid</i> / Resistencia a la luz / <i>Estabilidade das cores</i> / Solidità alla luce | EN 20 105 B02 | degree | > 6 |
| Surface treatment / <i>Oberflächenvergütung</i> / Traitement de surface / <i>Oppervlaktebehandeling</i> / Tratamiento de superficie / <i>Tratamento de superfície</i> / Trattamento di superficie | - | - | Evercare™ |
| Chemical product resistance / <i>Verhalten gegenüber Chemikalien</i> / Résistance aux produits chimiques / <i>Chemische bestendigheid</i> / Resistencia a los productos químicos / <i>Resistência aos produtos químicos</i> / Resistenza ai prodotti chimici | EN 423 | class | OK <i>beständig gegenüber nicht färbenden alkoholhaltigen Handdesinfektionsmitteln, Haushaltschemikalien und verdünnten Säuren und Laugen bei kurzzeitiger Einwirkung</i> |
| Anti-bacterial activity (E. coli - S. aureus - MRSA)* | ISO 22196 | - | > 99 % inhibits growth |
| ENVIRONMENT / INDOOR AIR QUALITY | | | |
| TVOC after 28 days / <i>TVOC (28 Tage)</i> / TVOC (28 jours) / <i>TVOC (28 dagen)</i> / TVOC (28 dias) / <i>TVOC (28 días)</i> / TVOC (28 giorni) | ISO 16000-6 | µg/m ³ | < 10 |
| Certification | - | - | Floorscore™ |
| CE marking / <i>CE Kennzeichnung</i> / Marquage CE / <i>EG-conformiteitsmerk</i> / Marca de conformidad CE / <i>Marca de conformidade CE</i> / Marcatura CE di conformità | | | |
| CE | EN 14041 | - | |

* The implementation of an effective cleaning method is the best defence against infection

INSTALLATION

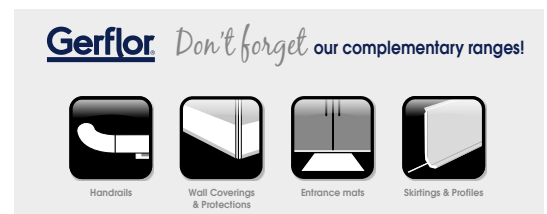
Laying is the responsibility of the installer. Installation should be made in accordance with installation guidelines supplied and regularly updated by Gerflor's Technical Department. Installation should be carried out in accordance with local standards. Subfloor to be smooth, hard, clean and dry prior to laying. Where applicable the subfloor must incorporate an effective Damp Proof Membrane. The material must be allowed to acclimatise 24 hours prior to installation in a room temperature of between 18-24°C. All seams must be heat welded using Gerflor matching weld rod.

MAINTENANCE

Maintenance should be carried out regularly to retain the appearance and durability of the floor. The floor covering should be maintained with regular sweeping and damp mopping using a neutral cleaner, or auto scrubber machine with an appropriate pad.

Rubber leaves indelible stains on vinyl floorings: do not use mats with rubber backing and replace tubular furniture feet with those made of PVC or polyamide. Place mats of sufficient length at entrances to reduce outside sources of dirt.

Further installation and maintenance instructions are available from Gerflor.



Committed to sustainable development