




MACTILE

gerflor.com



Gerflor[®]
the flooring group

MACTILE

 2 m	 300x300 mm 600x600 mm	PU	 100 % recyclable
--	---	----	--



0603 Bright White



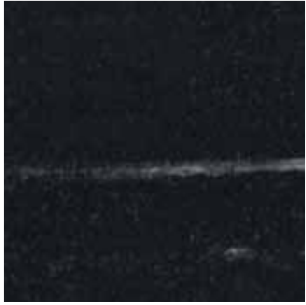
0607 Pearl



0606 Snow White



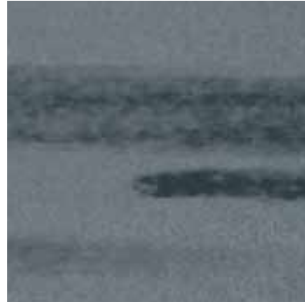
0613 Grey



0619 Black



0615 Pewter






0616 Dark Grey



0612 Stormy Grey

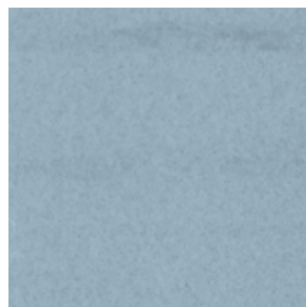


MACTILE

 2 m	 300x300 mm 600x600 mm	PU	 100 % recyclable
--	---	----	--



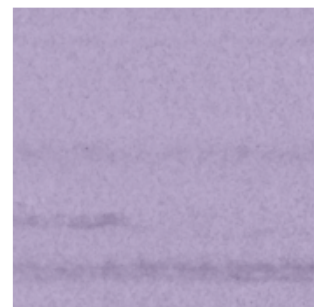
0673 Cobalt



0671 Sky Blue



0672 Blue



0660 Lavander



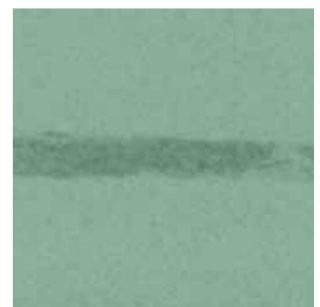
0676 Ocean Blue



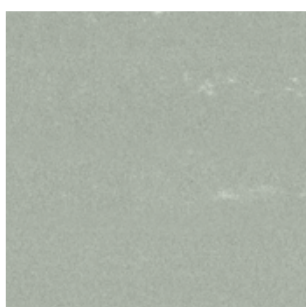
0659 Forest



0657 Rosemary



0656 Basil



0614 Misty



0610 White






0652 Mint

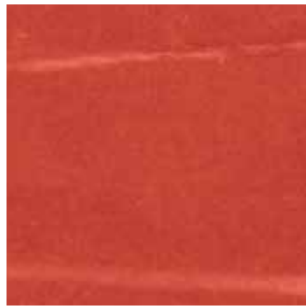


0653 Apple Green



MACTILE

 2 m	 300x300 mm 600x600 mm	PU	 100 % recyclable
---	---	----	--



0628 Signal Red



0623 Red Berries



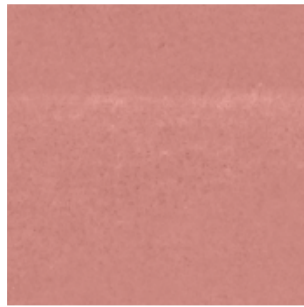
0647 Clay



0646 Cinnamon



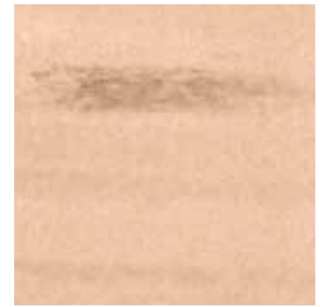
0663 Dark Raspberry



0622 Pink



0620 Pebble Stone



0685 Beige



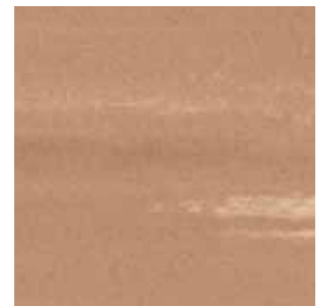
0644 Ambre



0645 Sunset



0686 Camel



0688 Brown



0641 Parchment



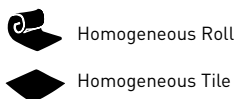
0642 Cream



0682 Sandal



0681 Desert Grey

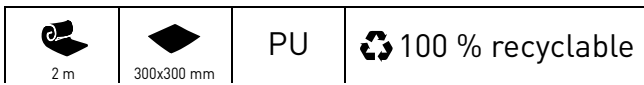


Homogeneous Roll

Homogeneous Tile

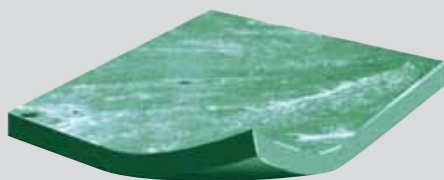
Due to the small size of the cuts, the samples do not reflect the actual pattern of the product.

MACTILE



YOUR FLOORING SOLUTION FOR PUBLIC BUILDING

- ▶ Surface quality => resistance to high traffic
- ▶ PU Treatment => reduced maintenance costs
- ▶ Mactile Classic: Anti-static (< 2 kV)



DESIGN AND DECORATIVE SOLUTIONS

- ▶ Complete new contemporary colour selection

ENVIRONMENTALLY RESPONSIBLE

- ▶ 100% recyclable product
- ▶ Made with more than 90% renewable resources (mineral quartz particles)
- ▶ Indoor air quality: low VOC emissions
- ▶ No heavy metals
- ▶ Made in KSA

CLASSIC	CLASSIC	FLEXIBLE	FLEXIBLE
300x300 mm	600x600 mm	2 m	300x300 mm

DESCRIPTION

			CLASSIC 300x300 mm	CLASSIC 600x600 mm	FLEXIBLE 2 m	FLEXIBLE 300x300 mm	FLEXIBLE 600x600 mm
Total thickness	EN 428	mm	1.6 / 2.0 / 2.5 / 3.0 / 3.2	2.0 / 2.5 / 3.0 / 3.2	1.6 / 2.0 / 2.5 / 3.0 / 3.2	2.0 / 2.5 / 3.0 / 3.2	2.0 / 2.5 / 3.0 / 3.2
Weight	EN 430	g/m ²	3050 / 3920 / 4860 / 6000 / 6500	3920 / 4860 / 6000 / 6500	3050 / 3920 / 4860 / 6000 / 6500	3920 / 4860 / 6000 / 6500	3920 / 4860 / 6000 / 6500
Width / Length of sheets	EN 426	cm/lm	-	-	200 / 10	-	-
Tile size	EN 427	mm	300 x 300	600 x 600	300 x 300	600 x 600	600 x 600
Approx. number of tiles per box	-	-	90 / 70 / 56 / 46 / 44	22 / 18 / 15 / 14	90 / 70 / 56 / 46 / 44	22 / 18 / 15 / 14	22 / 18 / 15 / 14
Approx. area coverage per box	-	m ²	8.10 / 6.30 / 5.04 / 4.14 / 3.96	7.92 / 6.48 / 5.40 / 5.04	8.10 / 6.30 / 5.04 / 4.14 / 3.96	7.92 / 6.48 / 5.40 / 5.04	7.92 / 6.48 / 5.40 / 5.04
Approx. weight per box	-	kg	25	31	25	31	31
Approx. coverage per roll	-	m ²	-	-	20	-	-
Approx. gross weight of roll	-	kg	-	-	(1.60) 63 / (2.00) 83 / (3.00) 115	-	-

CLASSIFICATION

Norm / Product specification			EN 654	EN 654	EN 649	EN 649
European classification	EN 685	class	34-43	34-43	34-43	34-43
Fire rating	EN 13 501 -1	class	Bfl-s1	Bfl-s1	Bfl-s1	Bfl-s1
Slip resistance wet	DIN 51 130	class	R9	R9	R9	R9
Static electrical propensity	EN 1815	kV	< 2	< 2	< 2	< 2

PERFORMANCES

			CLASSIC 300x300 mm	CLASSIC 600x600 mm	FLEXIBLE 2 m	FLEXIBLE 300x300 mm	FLEXIBLE 600x600 mm
Wear resistance	EN 660.2	mm ³	≤ 7.5	≤ 7.5	≤ 4.0	≤ 4.0	≤ 4.0
Wear group	EN 654	class	M	M	-	-	-
	EN 649	class	-	-	P	P	P
Dimensional stability	EN 434	%	Sheets ≤ 0.4 Tiles ≤ 0,25	Sheets ≤ 0.4 Tiles ≤ 0,25	Sheets ≤ 0.4 Tiles ≤ 0,25	Sheets ≤ 0.4 Tiles ≤ 0,25	Sheets ≤ 0.4 Tiles ≤ 0,25
Residual indentation	EN 433	mm	≈ 0.03	≈ 0.03	≈ 0.03	≈ 0.03	≈ 0.03
Thermal conductivity	EN 12 524	W/(m.K)	0,25	0,25	0,25	0,25	0,25
Colour fastness	EN 20 105 - B02	degree	≥ 6	≥ 6	≥ 6	≥ 6	≥ 6
Chemical resistance	EN 423	class	OK	OK	OK	OK	OK
Anti bacteria & fungicidal treatment	EN ISO 846	-	OK	OK	OK	OK	OK
Surface treatment	-	-	PU	PU	PU	PU	PU

- **DISSIPATIVE FLOORING (EL7):** available upon request.
- **ACCESSORIES:** Please contact us to get our complete offer of skirtings, welding rods and other accessories.
- **INSTALLATION:** We recommend to use our MaxiBond Adhesives and Self Levelling products. Please contact us to get further information about this range.



gerflor.com

ARCHITECTURE
DECORATION
SPORT
TECHNOSPECIFIC

Middle East: Gerflor Middle East

Dammam – KSA
Tel: +966 13 8471779 - Fax: +966 13 8471781
Email: info@gerflorme.com

Riyadh Sales & Technical Support Office

Riyadh – KSA
Tel: +966 11 476 5631 - Fax: +966 11 477 2734
Email: riyadh@gerflorme.com

Jeddah Sales & Technical Support Office

Jeddah – KSA
Tel: +966 12 639 6741 - Fax: +966 12 639 6734
Email: jeddah@gerflorme.com

Dubai Sales & Technical Support Office

Dubai – UAE
Tel: +971 4 3790808 - Fax: +971 4 3881305
Email: dubai@gerflorme.com

Bahrain Sales & Technical Support Office

Seef District – Bahrain
Tel: +973 17 581596 - Fax: +973 17581597
Email: bahrain@gerflorme.com

Kuwait Sales & Technical Support Office

Mobile: +965 94941217
Email: kuwait@gerflorme.com

Qatar Sales & Technical Support Office

Doha – Qatar
Mobile: +974 77029382
Tel: +974 44318387 - Fax: +974 44982165
Email: qatar@gerflorme.com

ASIA: Gerflor Asia

Tel: +852 9222 6355 - Fax: +852 3006 1449
Email: gerflorasia@gerflor.com

CHINA: Gerflor China

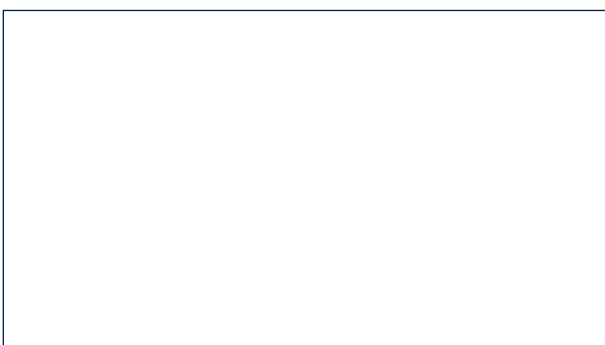
Tel: +8621 63578818 - Fax: +8621 63578998
Email: gerflorchina@gerflor.com

RUSSIA: Gerflor zao

Tel/Fax: +7 495 785 2371
Email: gerflorussia@gerflor.ru

Gerflor International

Tel: +33 (0) 4 74054000 – Fax: +33 (0) 4 74050313
Email: gerflorcontract@gerflor.com



Gerflor. Don't forget our complementary ranges!



Handrails



Wall Coverings & Protections



Entrance mats



Skirtings & Profiles

and Be CONNECTED!



www.gerflor.com



Committed to sustainable development

Gerflor
theflooringgroup